

# wp-eXtplorer

File manager for Wordpress

v1.0.0

Jul - 2010

*Contents*

*wp-eXtplorer*

3

*Installing wp-eXtplorer*

4

*Using wp-eXtplorer*

5

## ***wp-eXtplorer***

wp-eXtplorer is a wordpress plugin that wraps the popular file management component, eXtplorer. wp-eXtplorer allows admin users of a wordpress based site to directly interact with the server's file system allowing them to upload/download, edit and copy the files and directories on the server through a user-friendly GUI. It also provides the functionality to archive and unarchive files on the server, change permissions for files or directories.

If you need more information on eXtplorer it self, please visit: <http://extplorer.sourceforge.net/>

## ***Installing wp-eXtplorer***

Installing wp-eXtplorer is the same as installing any other wordpress plugin.

1. Login to the wordpress admin panel.
2. Click on plugins menu item on the left hand admin column.
3. Click on Add New menu item.
4. Click on the Upload link and browse for the wp-eXtplorer zip archive.
5. Activate the plugin once installed.

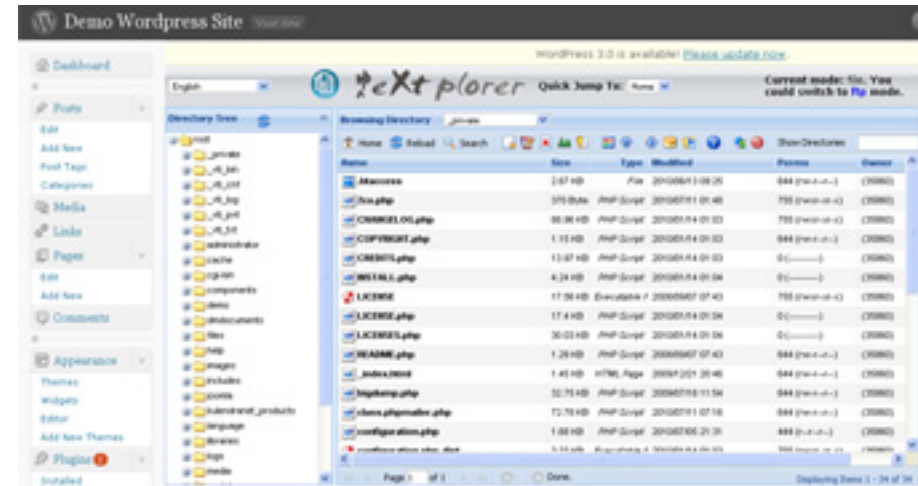
## Using wp-eXtplorer

wp-eXtplorer provides the admin users with a GUI with a two pane view. The left hand pane of the GUI presents the directory structure of the server as a tree view and the right hand view presents a directory listing of the current directory selected in the tree view.

Access to wp-eXtplorer is limited to users with User Level 8 or greater in the Wordpress installation. Once the plugin is installed, users will be presented with a wp-eXtplorer menu item that allows users to access the GUI.

Once the menu item is clicked, users will be asked to re-login to the wp-eXtplorer extension. The user name and the password for wp-eXtplorer will be the same as your Wordpress login. This additional login is introduced as a security mechanism that would stop external parties from directly accessing your filesystem.

Once logged in browse through the directory structure and use the toolbar icons to perform actions on files/directories.



## ***kBanners4Joomla***

kBanners4Joomla is the end-all of all banner components for Joomla. Providing the same flexible interface of kBanners4VM and kBanners4SOBI, kBanners4Joomla allows users to target their banners based on conditional URL parameters.

## ***Modules2Pages***

Modules2Pages is the ultimate module management solution for Joomla that allows users to assign any module to any page.

Ideal for websites that use multi-page components like Virtuemart , JomSocial, Community Builder and SOBI2.

## ***kBanners4VM***

kBanners4VM is the ultimate banner management solution for Virtuemart that allows users to set up HTML and image banners for your Virtuemart e-shop.

kBanners4VM allows you to set up banner groups and assign them to Virtuemart categories allowing you to target your advertisements to the correct audience.